

FILTER-DRIER SERIES DTG/STG INSTRUCTIONS



Sanhua offers a full line of liquid line filter-driers with molded core, providing proven performance under demanding conditions where moisture, contaminants, dirt or acid removal is required. Sanhua filter-driers are applicable for all common refrigerants, including R-134a, R-404A, R-410A, R-507 and R-290.



DTG SERIES



STG SERIES

GENERAL SPECIFICATIONS

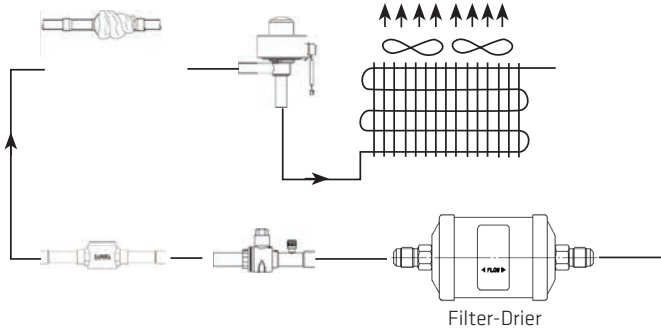
Applicable to fluids and refrigerants of GROUP 2 according to Directive 97/23/CE (29 May 1997) or GROUP A1 according to ANSI-ASHRAE 34-2010.

Temperature Range (TS): -22°F to +248°F (-30°C to +120°C)
Design Pressure (PS): 700 psi (48.3 bar)

ERC

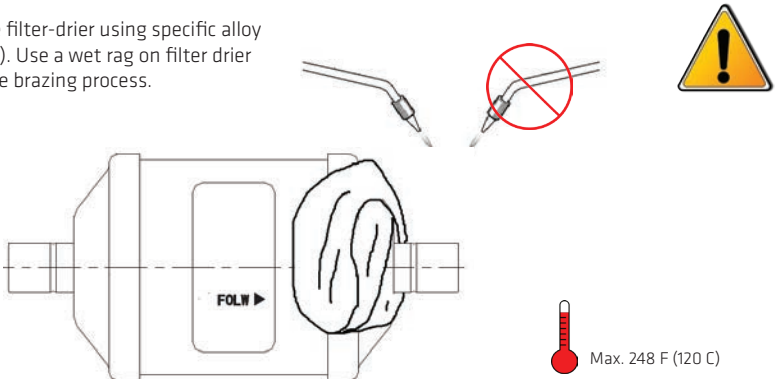
INSTALLATION INSTRUCTIONS: FILTER DRIER SERIES DTG/STG

- 1 Filter-driers must be installed in the liquid line before the Sight Glass and the Expansion Valve.



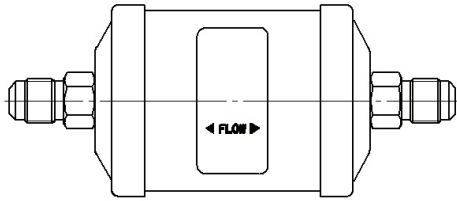
Note: For uni-flow models (DTG), arrow should point toward expansion device.

- 2 Braze the filter-drier using specific alloy (SilFos 15). Use a wet rag on filter drier during the brazing process.



Max. 248 F (120 C)

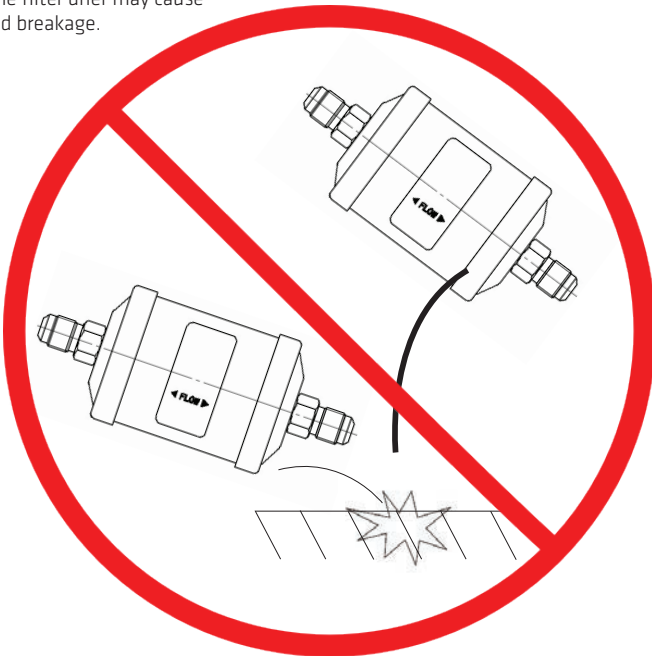
- 3** Tighten the thread connection respecting the maximum torque values in Table 1.



| SIZE (IN) | TORQUE (NM) | TORQUE (LBF.FT) |
|-----------|-------------|-----------------|
| 1/4 | 12~17 | 9~13 |
| 3/8 | 30~35 | 22~26 |
| 1/2 | 40~45 | 30~33 |
| 5/8 | 50~55 | 37~41 |
| 3/4 | 60~65 | 44~48 |
| 7/8 | 110~120 | 81~89 |



- 4** Dropping the filter drier may cause damage and breakage.



ADDITIONAL LANGUAGES

| Step | Español | Français |
|------|---|---|
| 1 | El filtro secador debe instalarse en la línea de líquido antes de la válvula de expansión termostática y del visor de líquido. | Les filtres déshydrateurs doivent être installés sur la ligne liquid avant le voyant liquid et la vanne d'expansion. |
| 2 | Soldar el filtro secador usando una aleación (SilFos 15). Poner un paño húmedo sobre el filtro durante el proceso de soldadura. | Braser les tubes de connection en utilisant un alliage spécifique (type SilFos 15). Placer un chiffon mouillé sur le corps du filtre déshydrateur pendant le brasage. |
| 3 | Apretar la conexión roscada respetando los valores máximos de Par de Ajustes en la tabla 1. | Serrer en respectant les valeurs maximum de couple de serrage selon la table 1. |



TECHNICAL SUPPORT

For additional technical information and to learn more about Sanhua's full product line, please visit sanhuausa.com.

North America Customer Support: 866-270-6559

Technical information
sanhuausa.com



SANHUA INTERNATIONAL
info@sanhuausa.com

NORTH AMERICA HEADQUARTERS

252 Fallbrook Dr., Suite 400
HOUSTON, TEXAS 77038

II-DTG_STG-MU-R1505-NA

Sanhua©2017 All rights reserved. Subject to change without notice.