

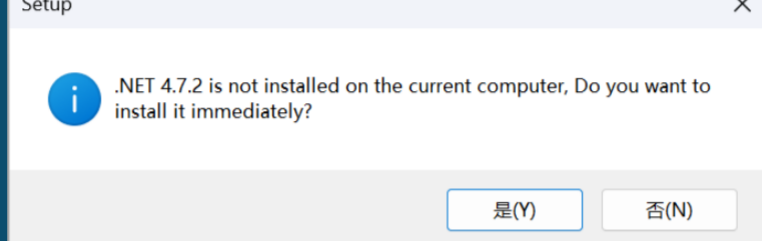
# BPHE EXPLORER Installation Guide

## 1. Download the decompression software installation package

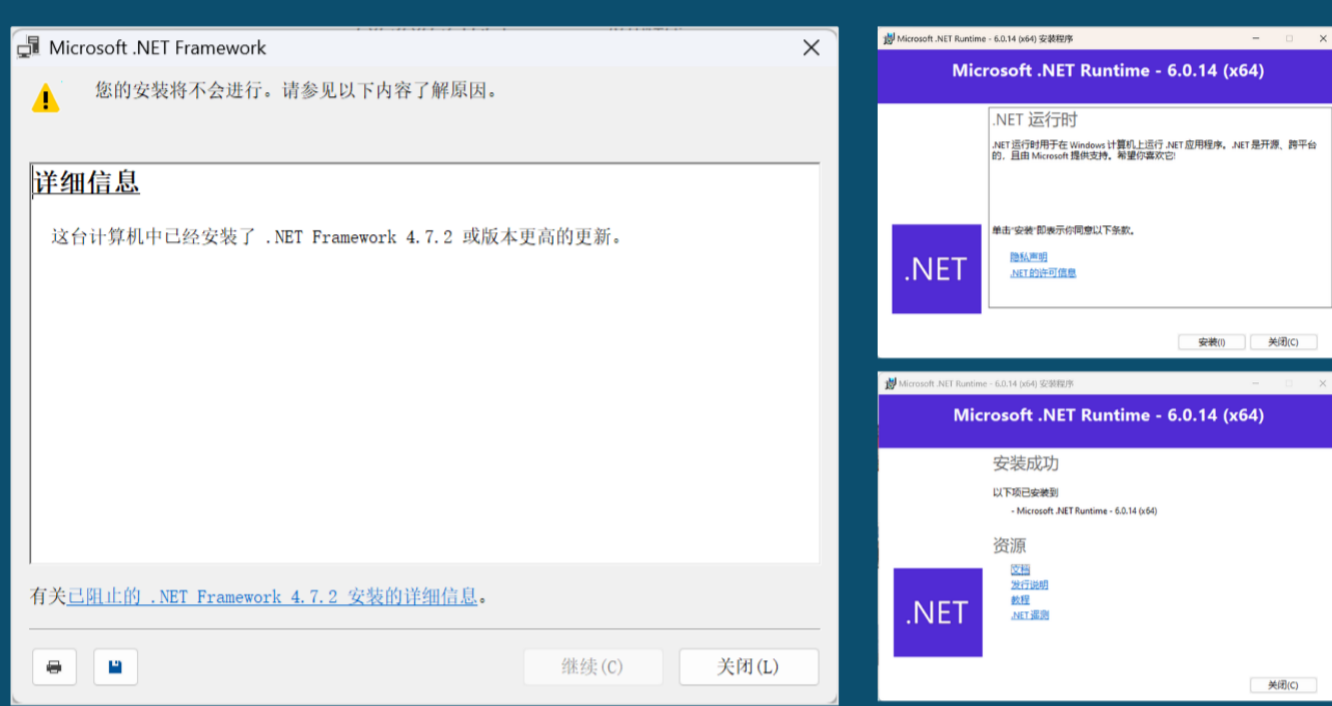
- 1.Extract the downloaded software installation package to any location you set
- 2.extract files
- 3.Click on the software installer :BPHE-Explorer-setup-Vxxxxx.exe

BPHE-Explorer-setup-V1.0.0.15.exe 2025/6/30 19:37 应用程序 97,317 KB

## 2. Detect .NET framework



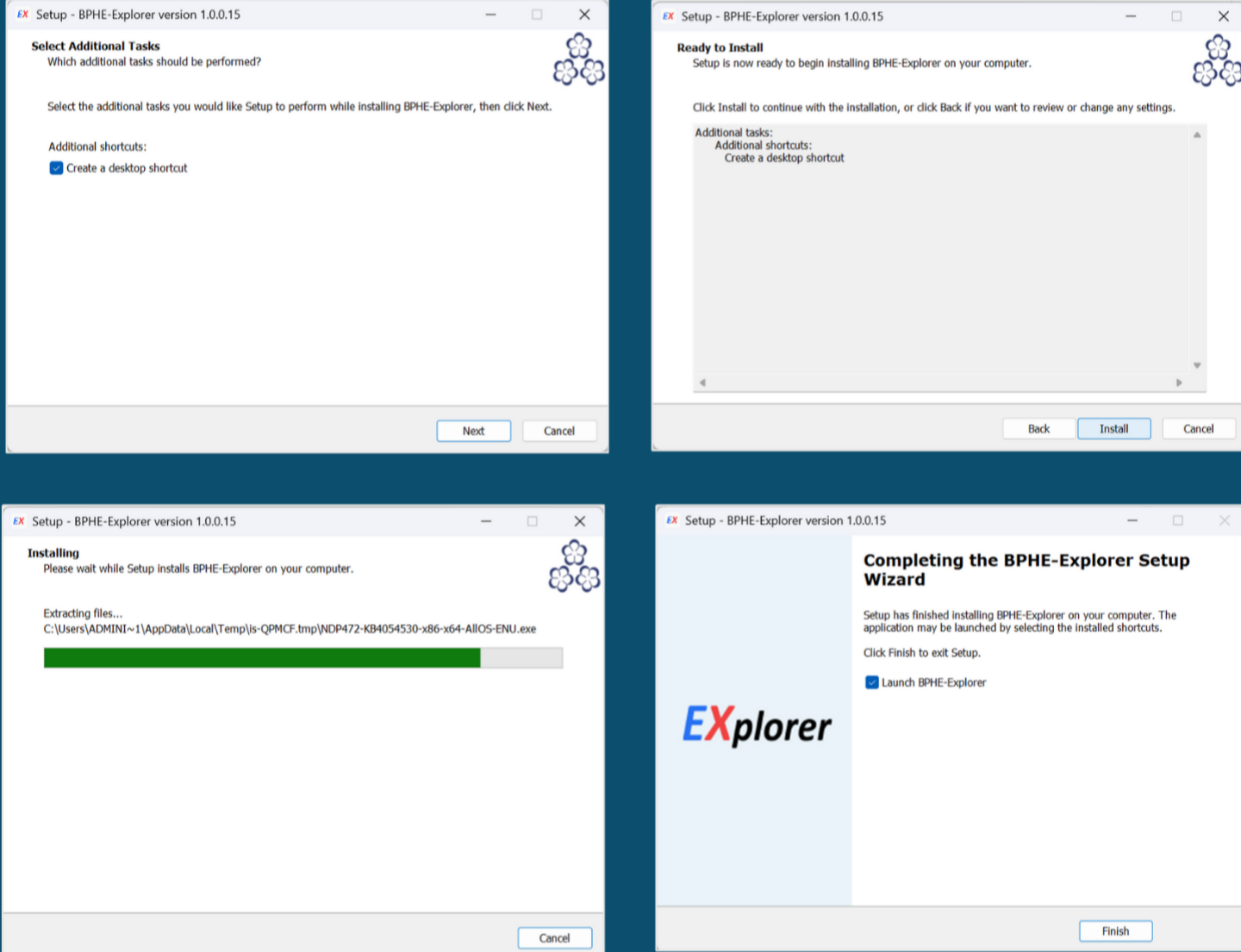
In this interface, if you are sure that it has been installed on your computer. Net 4.7.2 and above frameworks, you can click "No", skip this step, go directly to the software installation interface, if you are not sure, click "Yes", and proceed to the software first. Installation of the .NET framework. This process takes about a minute.



If it is detected, click "Close" to jump to the software installation interface.

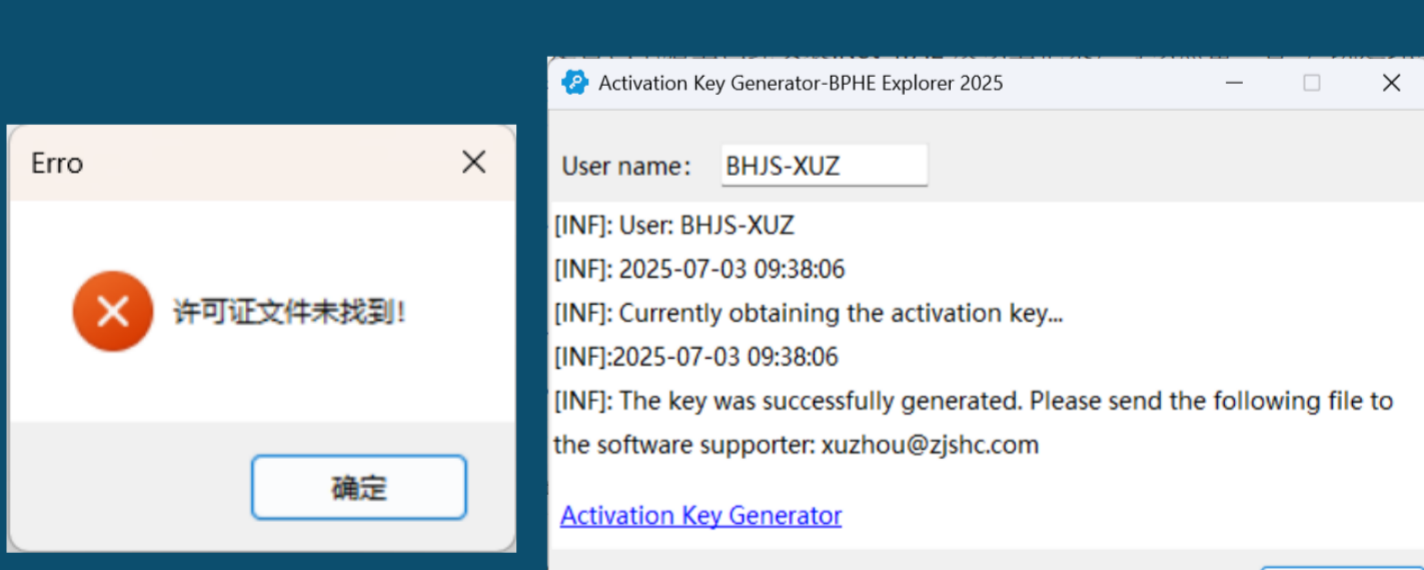
## 3. Installer

Follow the software installation navigation and click "Next" to install the software



## 4. Software Registration

After the software is installed, open the software for the first time (make sure to open the software with administrator privileges) and an error pop-up window of "license file not found" will pop up, click "OK", and click "OK" in the pop-up "Activation Key Generator-BPHE Explorer 2025" window to generate the registration file "Activation Key Generator".Click to enter the file location and send the file to the Sanhua sales representative you are in contact with (recommended) or the software support (johan.blucher@sanhuaeurope.com) to obtain the license file.



Put the obtained license.lic file in the installation directory of the software to complete the permission registration of the software. Click on the software icon to use the software normally.

