



DTG-M02 SERIES

1.5 IN³ FILTER DRIER



DTG-M02 series 1.5in³ filter drier are mainly used for light commercial refrigeration applications, with unidirectional flow to absorb moisture and filter out the impurities.

FEATURES

- STAINLESS STEEL HOUSING WITH HIGH-STRENGTH
- HOUSING SURFACE ADOPTS ADSORPTION PRINCIPLE TO FORM A NANO-SOLID FILM TO ANTI-RUST, SURVIVES MORE THAN 1500 HOURS OF NEUTRAL SALT SPRAY TEST.
- SOLID FILTER CORES, HIGHLY EFFICIENT IN MOISTURE ABSORPTION, FILTERING IMPURITY.
- COMPACT DESIGN, MEETING THE STRICT 150G SYSTEM LIMITS FOR FLAMMABLE REFRIGERANTS SUCH AS R290.

GENERAL SPECIFICATIONS

- Applicable refrigerants: HCFC, HFC, HC, HFO
- Medium temperature: -30°C~+120°C
- Ambient temperature: -30°C~ +55°C
- Max. Operation pressure PS max:
4.83MPa (48,3bar) - 700 PSI
- Installation position:
 - Flow direction corresponds to the arrow
 - Preferably installed in liquid line
- Certification: UL/CSA and PED declaration

1.5 IN3 FILTER DRIER



Model Designation Legend

1	Product Code	Filter Drier Series	
	DTG	Indicates unidirectional filter drier	
2	Filter Core	Structure and Material	
	M	Solid core, 100%3Å desiccant, stainless steel housing	
3	Filter core volume	[inch ³]	[cm ³]
	02	1.5	25
4	Connection Size	Pos. 5 shows "0": Solder [inch]	
	02	1/4	
	03	3/8	
	04	1/2	
4	Connection Size	Pos. 5 shows "1": Solder [mm]	
	06	6	
	10	10	
	12	12	
5	Pipe Connection	Type	
	0	Solder with inch connections	
	1 *	Solder with metric connections	
6	Version Number	Description	
	901	Series number	

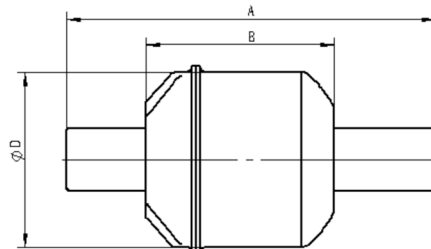
MODEL DESIGNATION EXAMPLE

Position Number						According to Model Designation Legend
1	2	3	4	5	6	
DTG	M	02	02	0	901	Unidirectional filter drier
DTG	M	02	02	0	901	Solid filter core with 100% 3Å desiccant, stainless steel housing
DTG	M	02	02	0	901	1.5 inch ³ filter core volume
DTG	M	02	02	0	901	When Pos. 5 is "0": connection size 1/4" inch
DTG	M	02	02	0	901	Solder connection inch
DTG	M	02	02	0	901	Series number

1.5 IN3 FILTER DRIER



GENERAL CHARACTERISTICS



Filter	Model	Part number (Industrial pack) ¹⁾	Solder connection		Dimensions & Weight				PED Category
					ØD	B	A	Weight	
			[inch]	[mm]	[mm]	[mm]	[mm]	[g]	
DTGM022s	DTG-M02020-901	10230041401	1/4		42	45	77	95	Art. 4.3
DTGM023s	DTG-M02030-901	10230039601	3/8		42	45	77	95	Art. 4.3
DTGM024s	DTG-M02040-901	10230041501	1/2		42	45	83	95	Art. 4.3

Note: 1) Please contact Sanhua representative regarding availability and exact item number. Products can be supplied in industrial boxes only.

SELECTION TABLE

Model	Capacity ¹⁾ [kW]					Moisture Absorption (gram H ₂ O)							
	R134a	R404A	R290	R407C ²⁾	R410A	R134a		R404A		R407C ²⁾		R22	
		R507A				75°F	125°F	75°F	125°F	75°F	125°F		
						23,9°C	51,7°C	23,9°C	51,7°C	23,9°C	51,7°C	23,9°C	51,7°C
	DTGM022s	2.33	1.64	2.56	2.36	2.36	3.2	2.8	3.5	2.9	2.7	2.5	3.0
DTGM023s	3.50	2.46	3.85	3.54	3.54	3.2	2.8	3.5	2.9	2.7	2.5	3.0	2.2
DTGM024s	4.67	3.28	5.13	4.72	4.82	3.2	2.8	3.5	2.9	2.7	2.5	3.0	2.2

Note: 1) The above data is based on clean system at ideal conditions; with impurities, accumulated in the filter, the capacity may decrease
 2) R407C capacity is based on dew point conditions

1.5 IN3 FILTER DRIER



SELECTION FORMULAS

Filter Driers for liquid line are manufactured in compliance with ARI Standard 710. Maximum flow rate of liquid refrigerant at a differential pressure of 0,07bar (1psi) is indicated by kW (ton) which is based on the temperature of liquid refrigerant 30°C (86°F), the evaporating temperature of -15°C (5°F) and the following mass flow:

- 0,40 kg/min/kW (3.1 lb/min/ton) R134a
- 0,53 kg/min/kW (4.1 lb/min/ton) R404A, R507A
- 0,39 kg/min/kW (3.0 lb/min/ton) R407C
- 0,36 kg/min/kW (2.8 lb/min/ton) R410A

Note: Data on water absorption is based on the following EPD (method: ASHRAE Standard 63.1):

- 50ppm R134a
- 50ppm R404A
- 50ppm R407C
- 50ppm R410A
- 50ppm R507A

For complete product family information please visit us at www.sanhuaeurope.com and download the full range of datasheet at [TECHNICAL INFORMATION LINK](#).