

## SANHUA Muffler - TXY/XYQ SERIES



Muffler are used in refrigerating systems such as air conditioners or heat pumps. They are installed in the discharge line or other lines with high pulsation or vibration media to reduce noise.

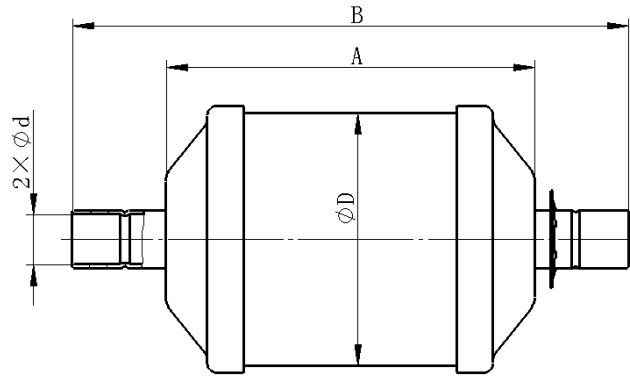
### Features

- Excellent anti-shock and anti-vibration performance with steel, stainless steel or copper casing

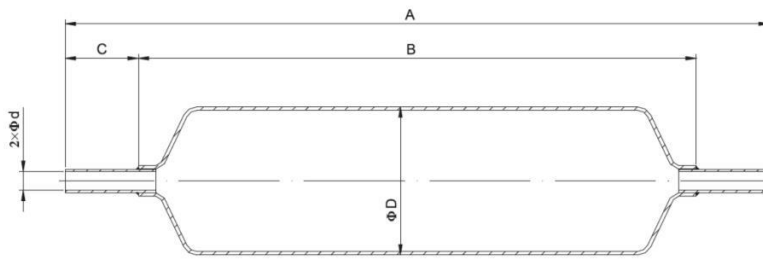
### General Specification

- Applicable refrigerant: HFC / HC / HFO
- Applicable medium temperature:  $-30^{\circ}\text{C} \sim +120^{\circ}\text{C}$  ( $-22^{\circ}\text{F} \sim +248^{\circ}\text{F}$ )
- Applicable ambient temperature:  $-30^{\circ}\text{C} \sim +55^{\circ}\text{C}$  ( $-22^{\circ}\text{F} \sim +131^{\circ}\text{F}$ )
- Maximum working pressure: TXY series: 4.8MPa; XYQ series: 4.5Mpa
- Certification: UL, PED, UKCA, CSA (Refer to TXY series)
- XYQ-muffler are tailored products. Sales codes are specified according to customer requirements

TECHNICAL PARAMETERS



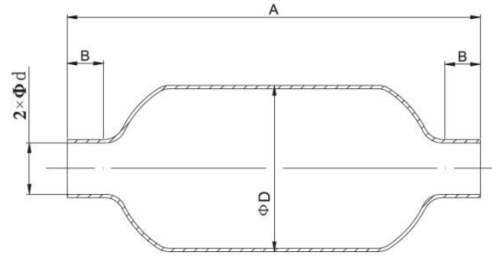
Model	U11	Dimenisons				Connection type
		D mm	A mm	B mm	d in	
TXY-A08020-901	10265005601	65	95	133	1/4	Solder Connections
TXY-A08030-901	10265005201	65	95	133	3/8	
TXY-A08040-901	10265004701	65	95	143	1/2	
TXY-A08050-901	10265005001	65	95	143	5/8	
TXY-A16030-901	10265003401	76	116	154	3/8	
TXY-A16040-901	10265003501	76	116	164	1/2	
TXY-A16050-901	10265003601	76	116	164	5/8	



Spun Steel Muffler



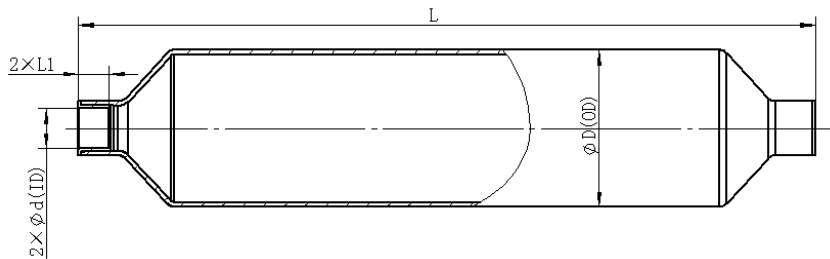
Model	Connection type					
	D mm	A mm	B mm	C mm	d in	
XYQ-FXX025	25,4	120~450	70~330	25~150	1/2, 1/4, 3/8	Solder Connections
XYQ-FXX031	31,75	120~450	70~330	25~150	1/2, 1/4, 3/8	
XYQ-FXX035	35	120~450	70~330	25~150	1/2, 1/4, 3/8	
XYQ-FXX040	40	120~450	70~330	25~150	1/2, 1/4, 3/8	
XYQ-FXX048	48	120~450	90~330	25~150	1/2, 1/4, 3/8	
XYQ-FXX050	50,8	120~450	90~330	25~150	1/2, 1/4, 3/8	
XYQ-FXX065	65	120~450	130~330	25~150	1/2, 1/4, 3/8	



Spun Copper Muffler



Model	Dimensions				Connection type
	D mm	B mm	A mm	d in	
XYQ-CXX025	25,4	5~15	70~330	1/2, 1/4, 3/8	Solder Connections
XYQ-CXX030	30	5~15	70~330	1/2, 1/4, 3/8	
XYQ-CXX031	31,75	5~15	70~330	1/2, 1/4, 3/8	
XYQ-CXX035	35	5~15	70~330	1/2, 1/4, 3/8	
XYQ-CXX041	41,3	5~15	90~330	1/2, 1/4, 3/8	
XYQ-CXX048	48	5~15	90~330	1/2, 1/4, 3/8	
XYQ-CXX050	50,8	5~15	90~330	1/2, 1/4, 3/8	



Stainless steel Muffler



Model	Dimensions				Connection type
	$\phi D(OD)$	L	L1	$\Phi d(ID)$	
	mm	mm	mm	inch	
XYQ-SXX019	19	90~330	5~15	1/4, 3/8	Solder Connections
XYQ-SXX025	25	90~330	5~15	1/2, 3/8	
XYQ-SXX028	28	90~330	5~15	1/2, 3/8	
XYQ-SXX032	31.8	90~330	5~15	1/2, 3/8	
XYQ-SXX035	35	90~330	5~15	1/2, 3/8	
XYQ-SXX038	38	90~330	5~15	1/2, 3/8	
XYQ-SXX045	45	110~550	5~15	5/8, 3/4	
XYQ-SXX048	48	110~550	5~15	5/8, 3/4	
XYQ-SXX051	50.8	110~550	5~15	5/8, 3/4	
XYQ-SXX057	57	110~550	5~15	3/4, 1"	
XYQ-SXX063	63	110~530	5~15	3/4, 1"	
XYQ-SXX070	70	110~400	5~15	1"	
XYQ-SXX076	76	110~400	5~16	1"	